

10.1302/0301-620X.107B3.BJJ-2024-0858.R1

Table i. Prespecified complications of interest.

Classification	Complication
Surgery-specific	Prosthesis dislocation, fixation failure, periprosthetic or peri-implant fracture, reoperation for any indication, revision surgery, re-operation for infection, surgical site infection, and deep or organ space surgical site infection
General	Acute kidney injury, blood transfusion, cerebrovascular accident, myocardial infarction, lower respiratory tract infection, urinary tract infection, venous thromboembolism, deep vein thrombosis, and pulmonary embolism

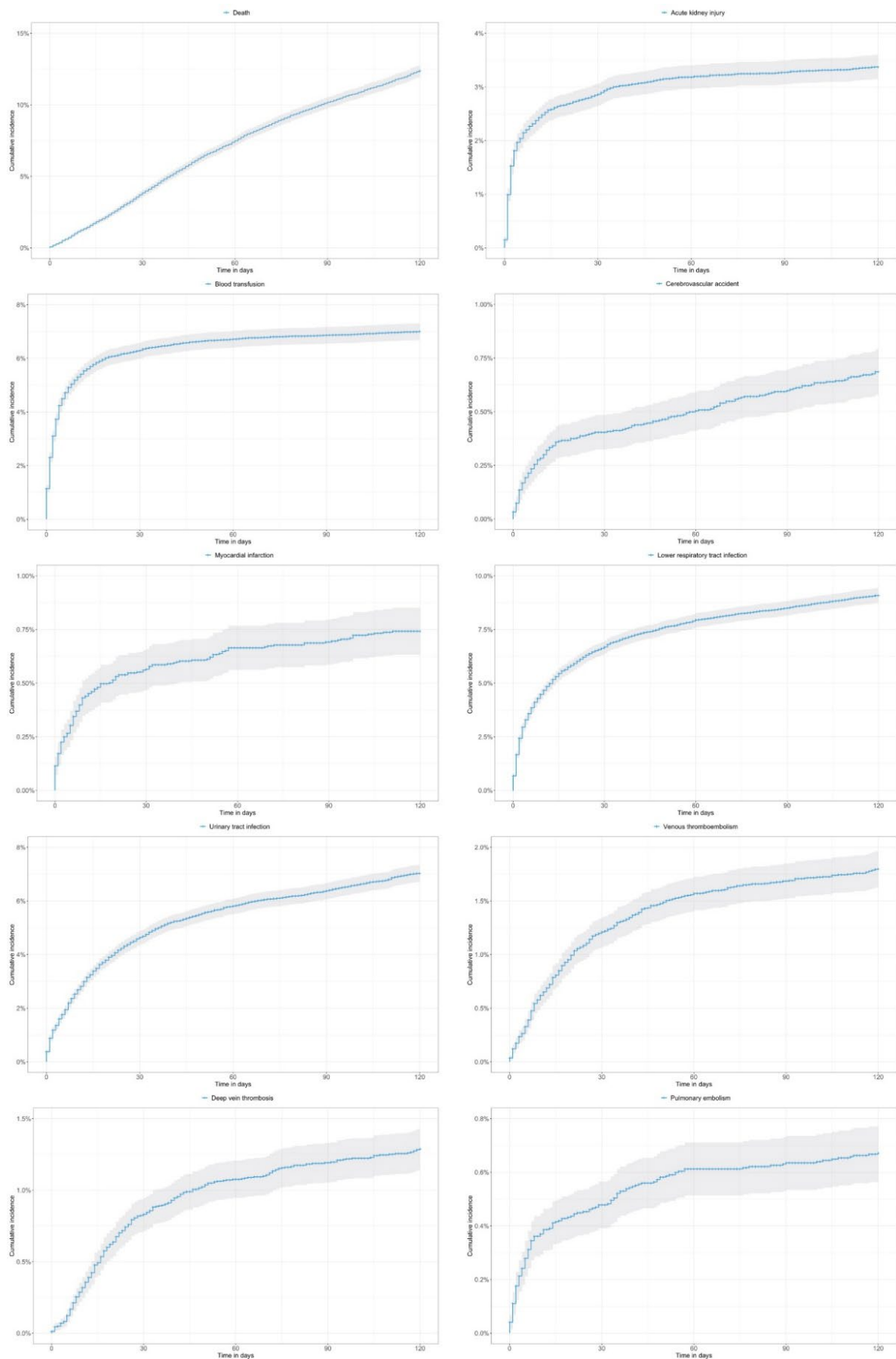


Fig. a. Risks of all-cause mortality and general complications after hip fracture. Cumulative incidence curves up to 120 days are presented for death and the following general complications: acute kidney injury, blood transfusion, cerebrovascular accident, myocardial infarction, lower respiratory tract infection, urinary tract infection, venous thromboembolism, deep vein thrombosis, and pulmonary embolism.

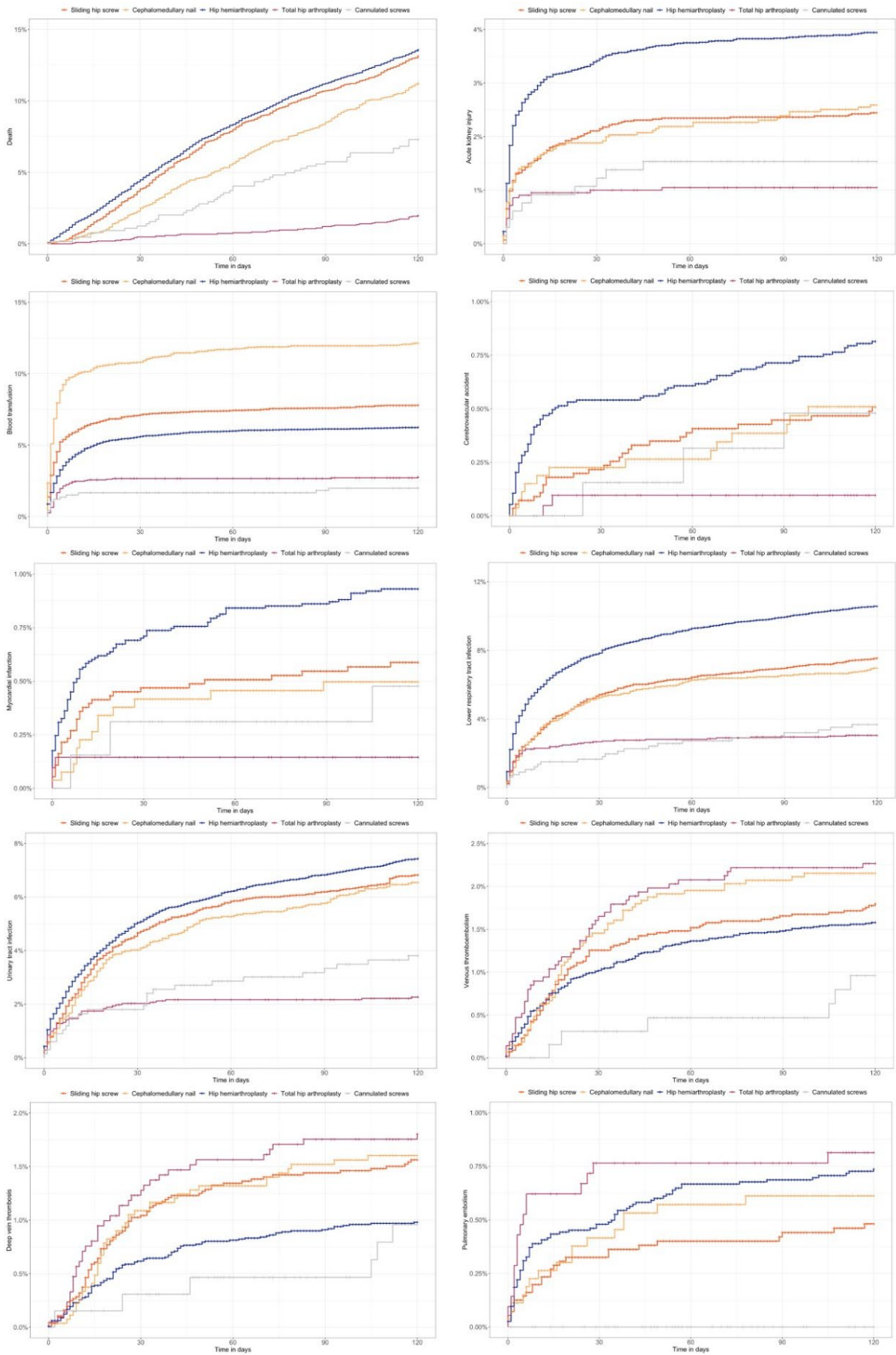


Fig. b. Risks of all-cause mortality and general complications after hip fracture for each operation type. Cumulative incidence curves up to 120 days are presented for death and the following general complications according to operation type: acute kidney injury, blood transfusion, cerebrovascular accident, myocardial infarction, lower respiratory tract infection, urinary tract infection, venous thromboembolism, deep vein thrombosis, and pulmonary embolism.

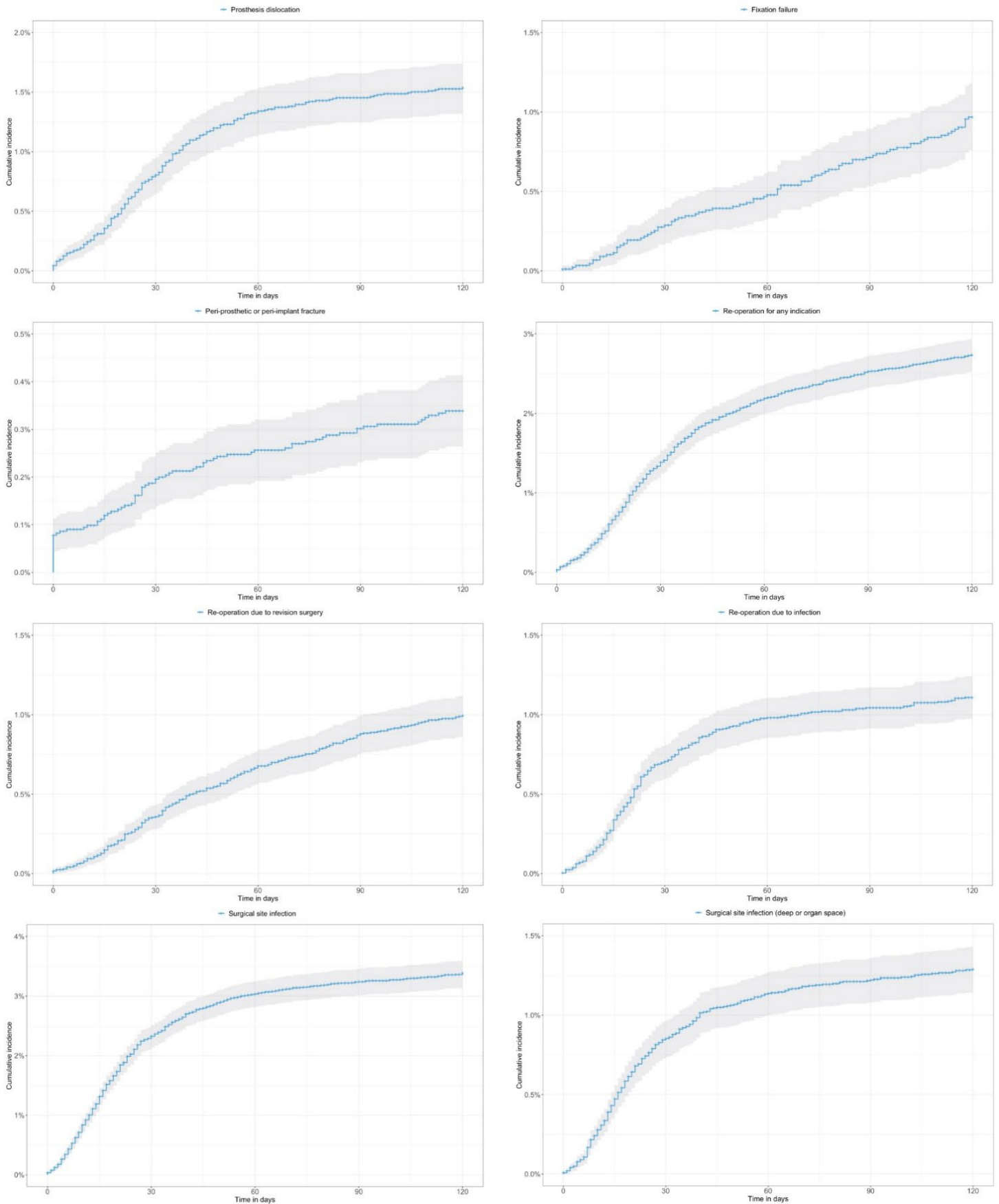


Fig. c. Risks of surgery-specific complications after hip fracture. Cumulative incidence curves up to 120 days are presented for the following surgery-specific complications: prosthesis dislocation, fixation failure, peri-prosthetic or peri-implant fracture, reoperation for any indication, reoperation for revision surgery, reoperation for infection, surgical site infection, and deep or organ space surgical site infection.

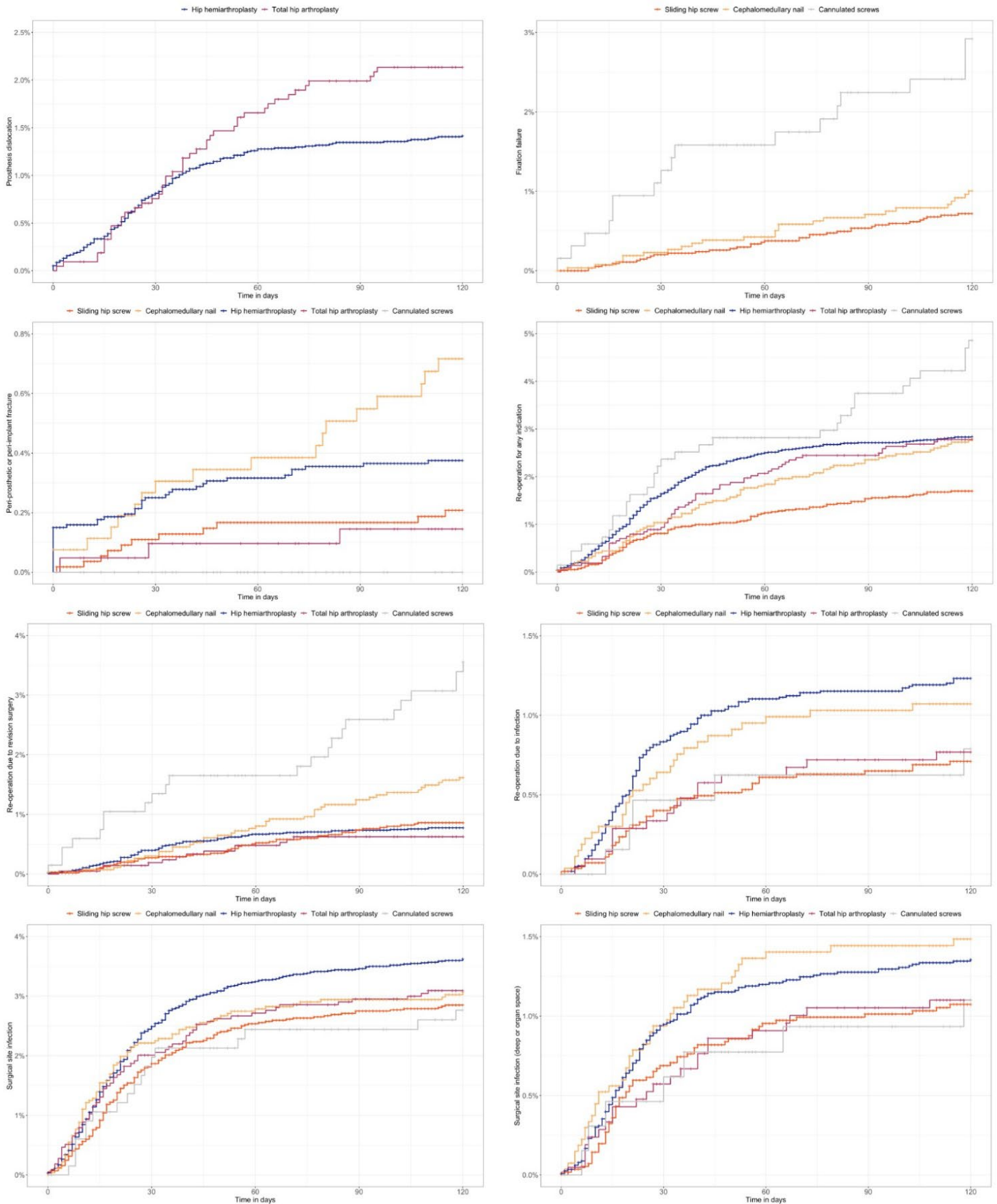


Fig. d. Risks of surgery-specific complications after hip fracture for each operation type. Cumulative incidence curves up to 120 days are presented for the following surgery-specific complications according to operation type: prosthesis dislocation, fixation failure, periprosthetic or peri-implant fracture, reoperation for any indication, reoperation for revision surgery, reoperation for infection, surgical site infection, and deep or organ space surgical site infection.