

■ SUPPLEMENTARY MATERIAL

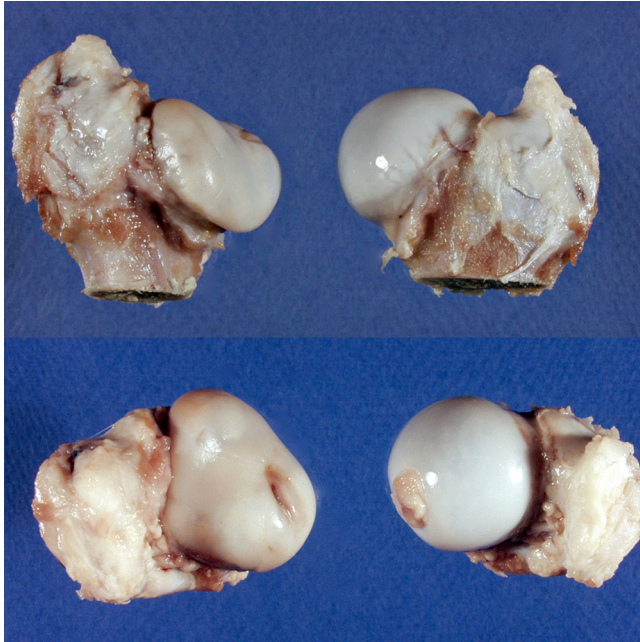


Fig. a

Photographs showing a deformed femoral head (left) following induction of avascular necrosis. Multi-planar deformation is seen on antero-posterior (top) and superior (bottom) views, compared with normal sphericity of corresponding non-operated side femoral head views (right).

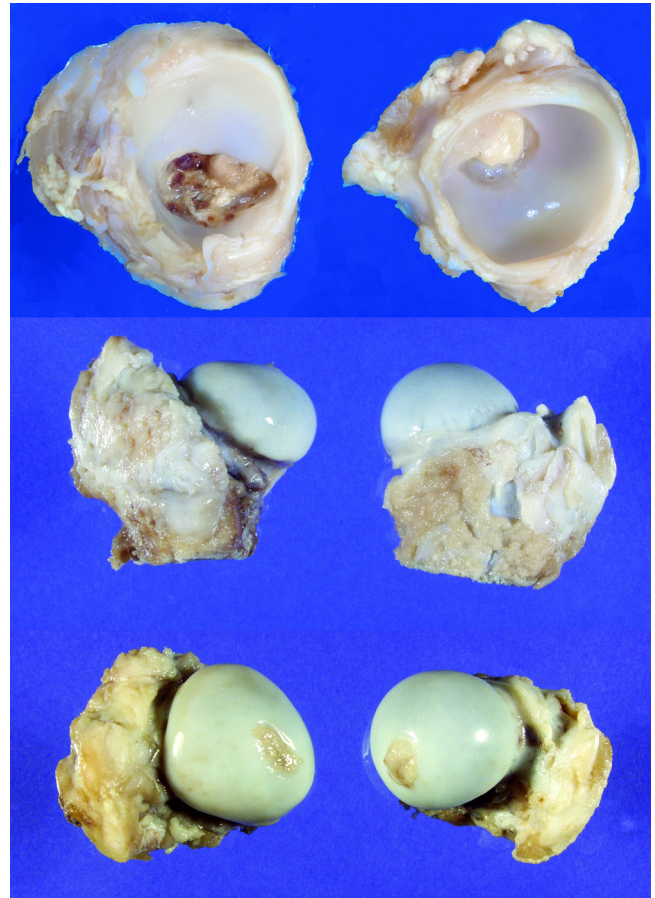


Fig. b

Top: photographs of two acetabula, on both operated side (left) and non-operated side (right). The operated side shows a flattened labrum and shallower socket. Below, the corresponding operated and non-operated femoral heads are shown from antero-posterior and superior (lower most) views.